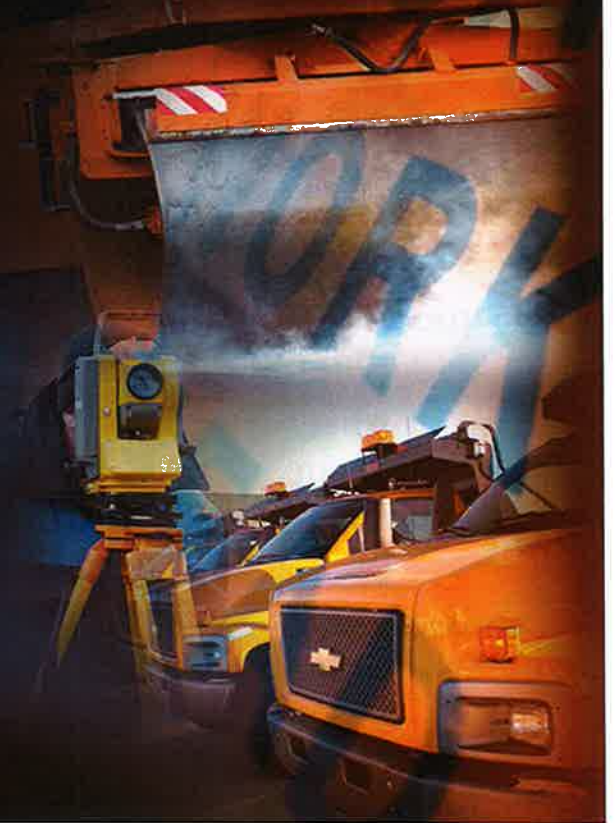
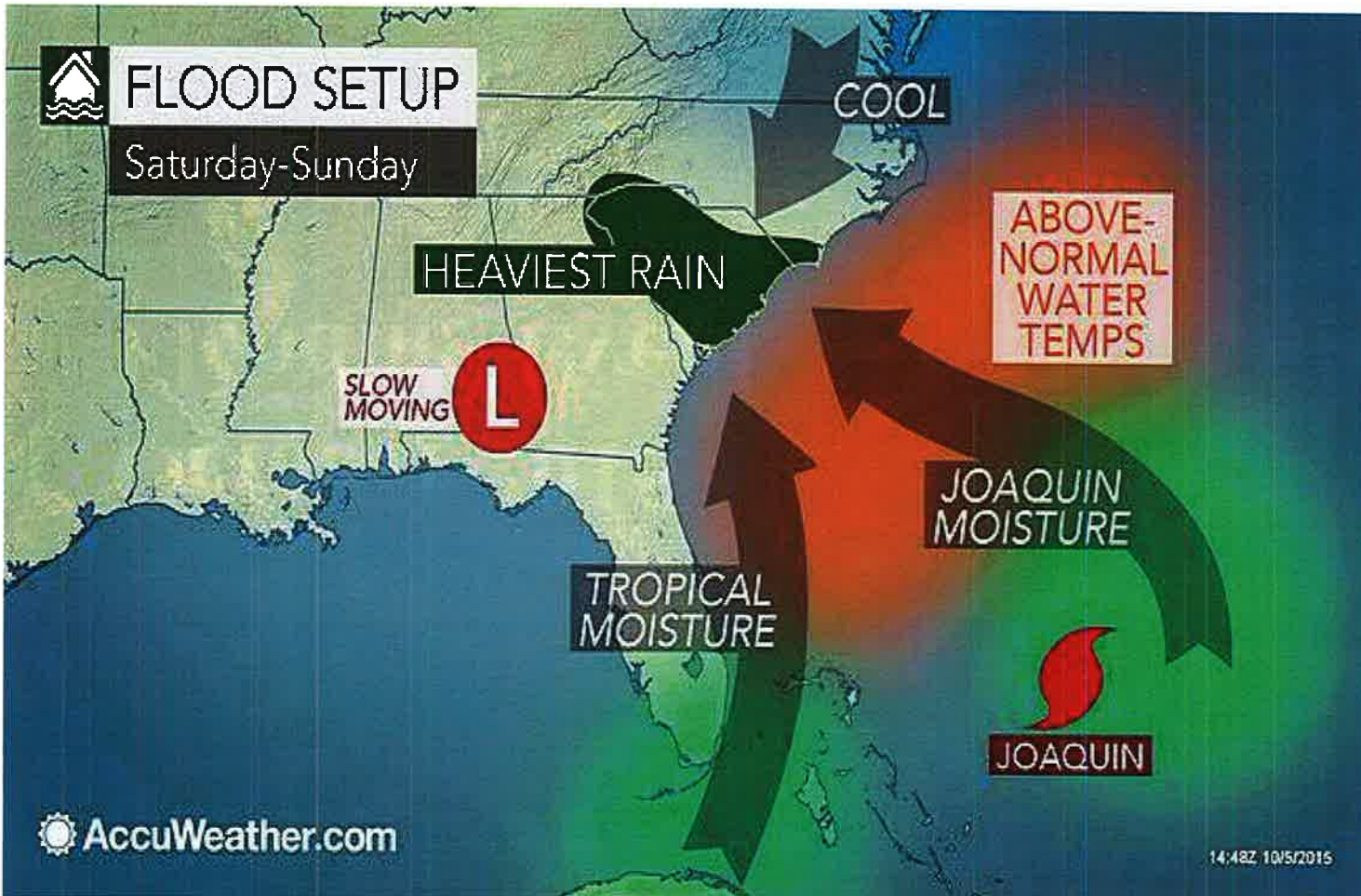




South Carolina Department of Transportation

October 2015 Flooding Event





Hurricane Joaquin tropical moisture
+
Non-tropical storm in the South
+
Strong High Pressure to the North

↓

Stalled System

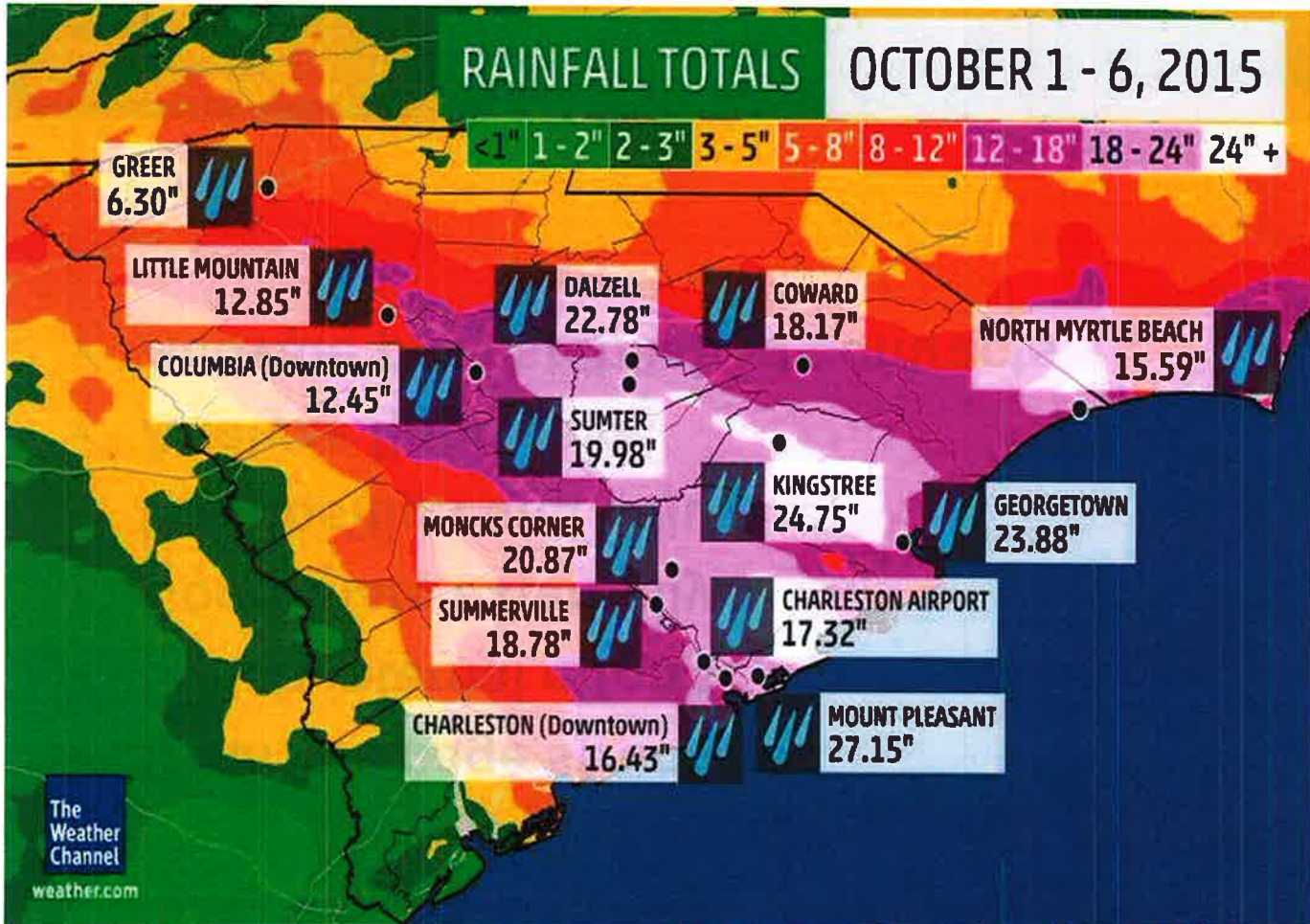
Prep Activities

- ✓ **Clear drainage structures.**
- ✓ **Synch internal efforts.**
- ✓ **Coordinate externally.**
- ✓ **Pre-position and adjust.**
- ✓ **Analyze floodways.**
- ✓ **Activate pre-established contracts.**



RAINFALL TOTALS OCTOBER 1 - 6, 2015

<1" 1-2" 2-3" 3-5" 5-8" 8-12" 12-18" 18-24" 24"+

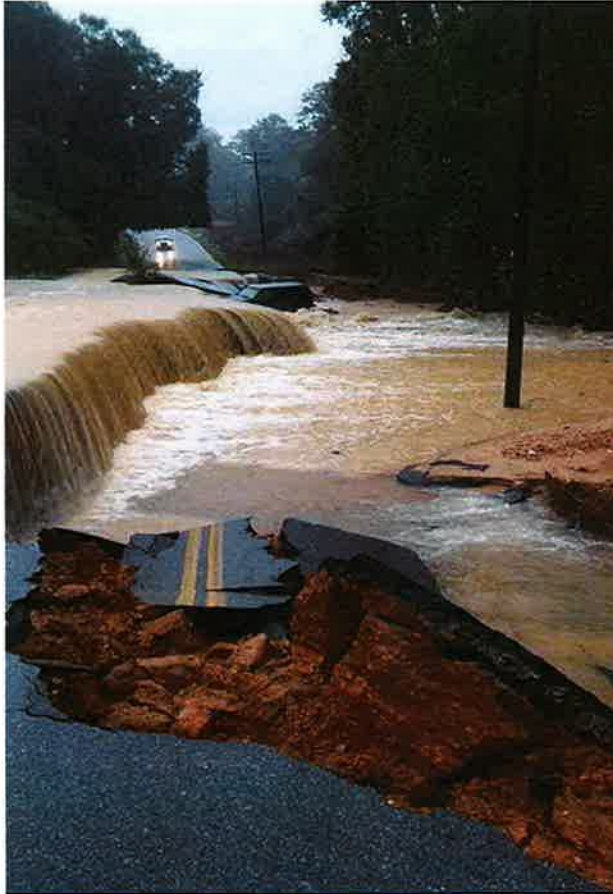


The Weather Channel
weather.com

SCDOT



Slide #4



Congaree Road in Lower Richland

Caughman Road in Richland Co

Dorchester Road near Summerville

Clarendon County



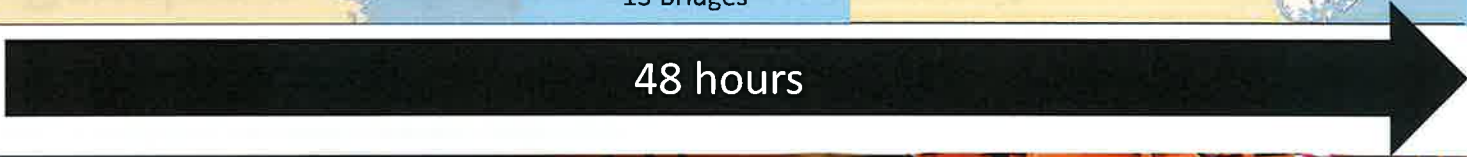
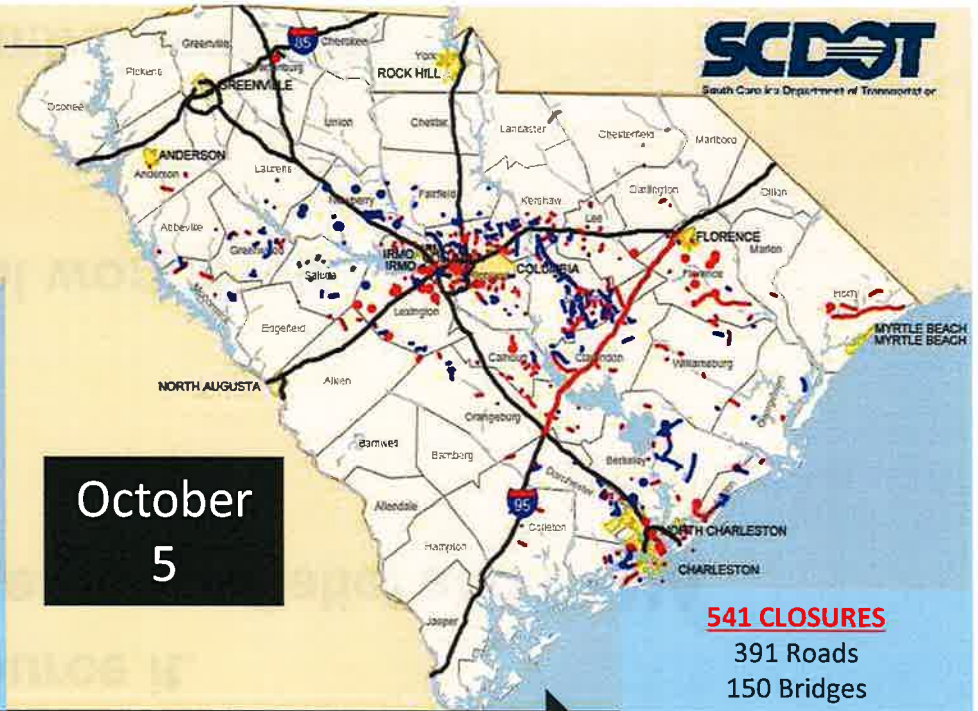
SCDOT

Slide #5

Response

- Safety is top priority.
- Close roads and bridges as needed.
- Utilize entire maintenance force.
- Mobilize bridge inspectors & engineers.
- Coordinate.
- Assist Counties and Municipalities.
- Communicate often.





Recovery Plan

- **Secure, Assess, Prioritize, Remove Debris & Restore.**
- **Develop a work plan and resource it.**
- **Effectively manage FHWA Emergency Relief and FEMA programs.**

Key Strategies

- **Maximize utilization of internal workforce.**
- **Close coordination.**
- **Communicate frequently.**
- **Contain costs & maximize reimbursements.**

SCDOT will participate in 2 Federal Programs



FHWA

Emergency Relief Program

FEMA



FHWA: Emergency Relief Program

- 100% reimbursement for temporary repairs on a portion of the Federal-Aid system for the first 180 days. Reverts to normal split after 180 days.
- Participation levels for permanent repairs follow normal split (80-20 or 90-10).

US 176 Bridge



Monticello Road Bridge End Repairs

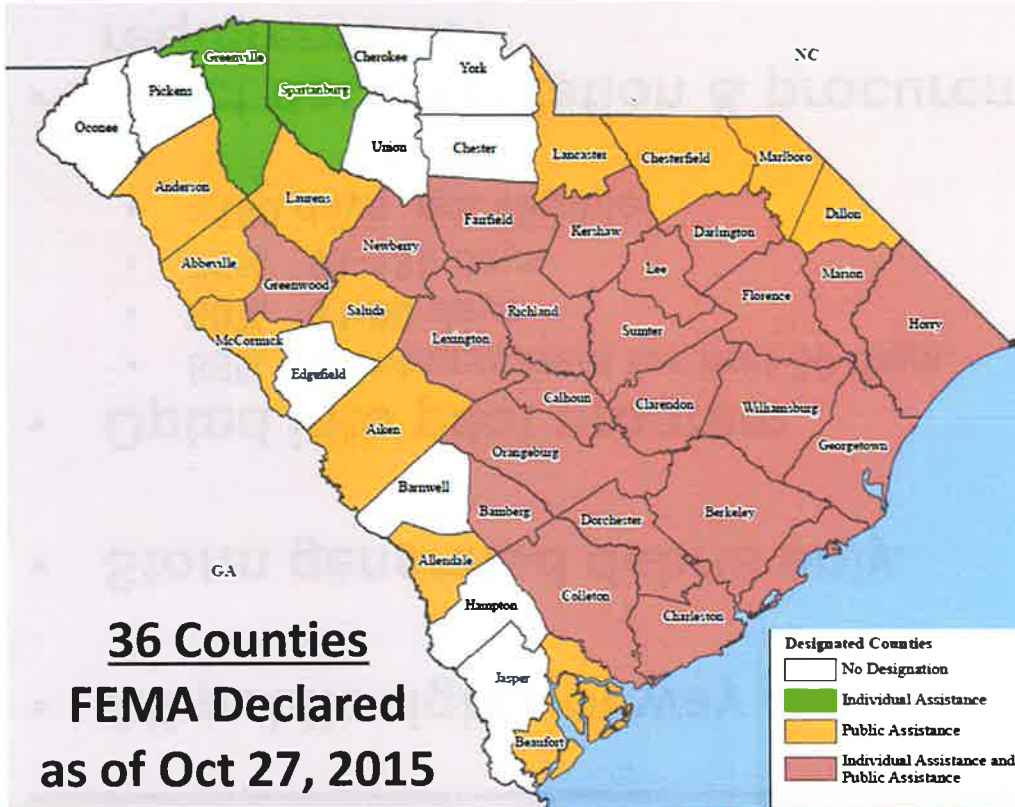


I-95 Bridge
Foundation Repairs

SCDOT

Slide #10

FEMA: Public Assistance Program



- **Category A: Debris Removal**
- **Category B: Emergency Protective Measures (temporary repairs / stabilizing)**
- **Category C: Roads & Bridges (permanent repair/replacement)**

FEMA Cat A: Debris Removal

- All public rights of way are eligible.
- Storm generated debris only.
- Opted into pilot program.
 - 85% reimbursement for first 30 days.
 - 80% 31-90 days
 - 75% 91-180 days
 - >180 days not eligible
- Strict documentation & procurement requirements.



BEFORE



AFTER

FEMA Cat B: Emergency Protective Measures

- Temporary repairs to stabilize infrastructure.
- Must be able to demonstrate that work was required to mitigate threats to public safety.
- 75% reimbursement.
- Not applicable where FHWA Emergency Relief funds are eligible.

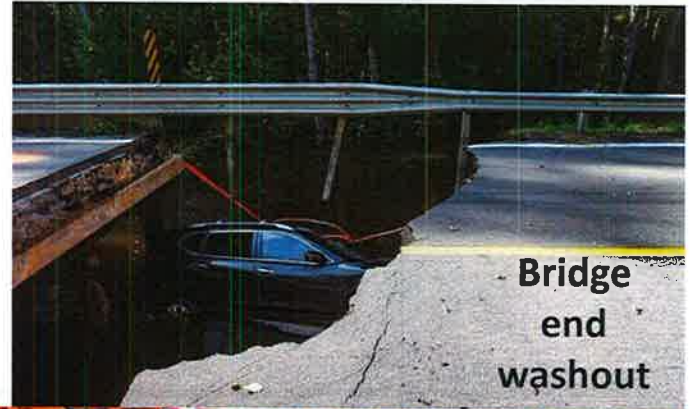


FEMA Cat C: Roads & Bridges

- Permanent repairs for damage caused directly by the disaster.
 - Repair if possible.
 - Replace only if beyond repair.
- 75% reimbursement.
- Generally, it is not a betterment program.
- Not applicable where FHWA Emergency Relief funds are eligible.



Shoulder and lane repairs

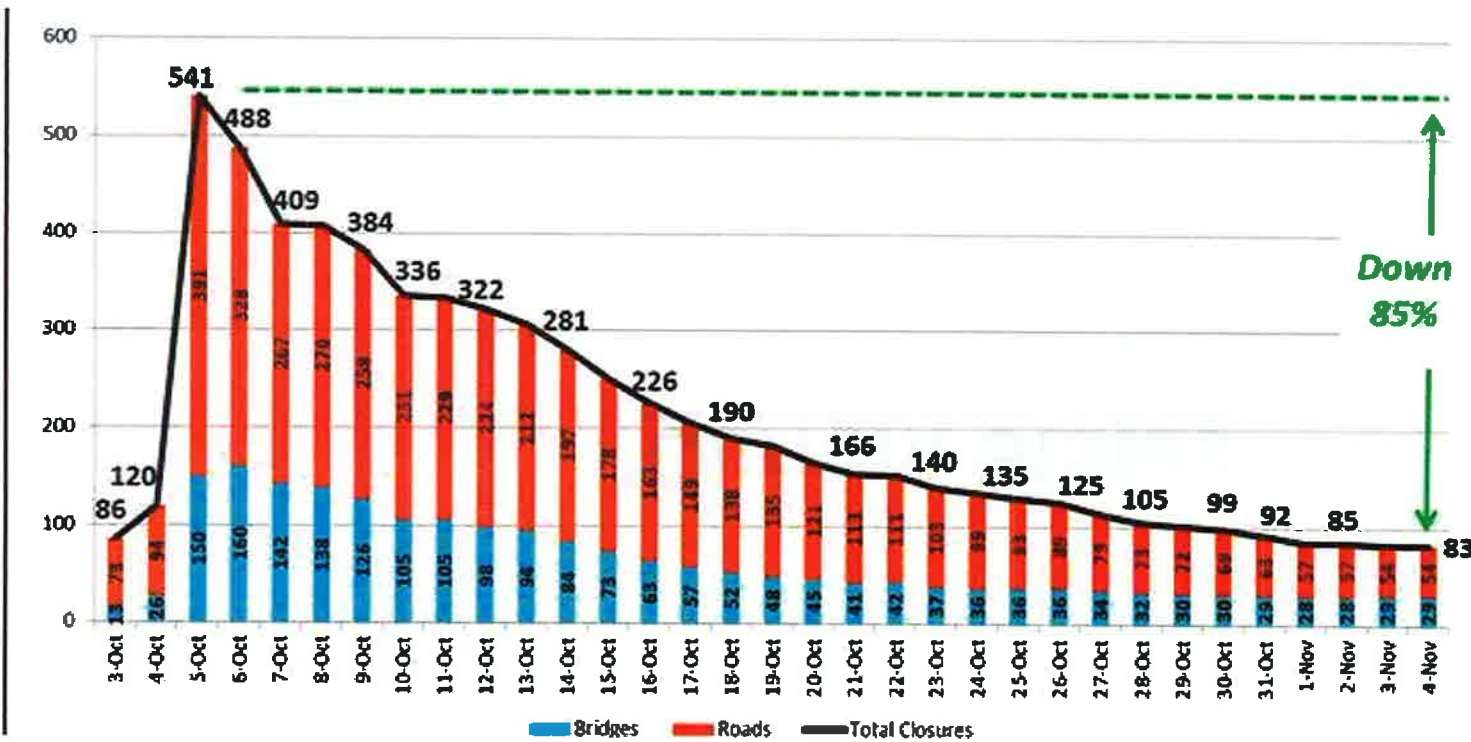


Bridge end washout

Current Status



Recovery Progress: Closure Status (as of Nov 4)



All Interstates are OPEN.

10 Primary Routes remain

CLOSED:

Richland: US 21, SC 48 & SC 769.

Clarendon: US 15, US 301 & US 521 (partial).

Newberry: US 176.

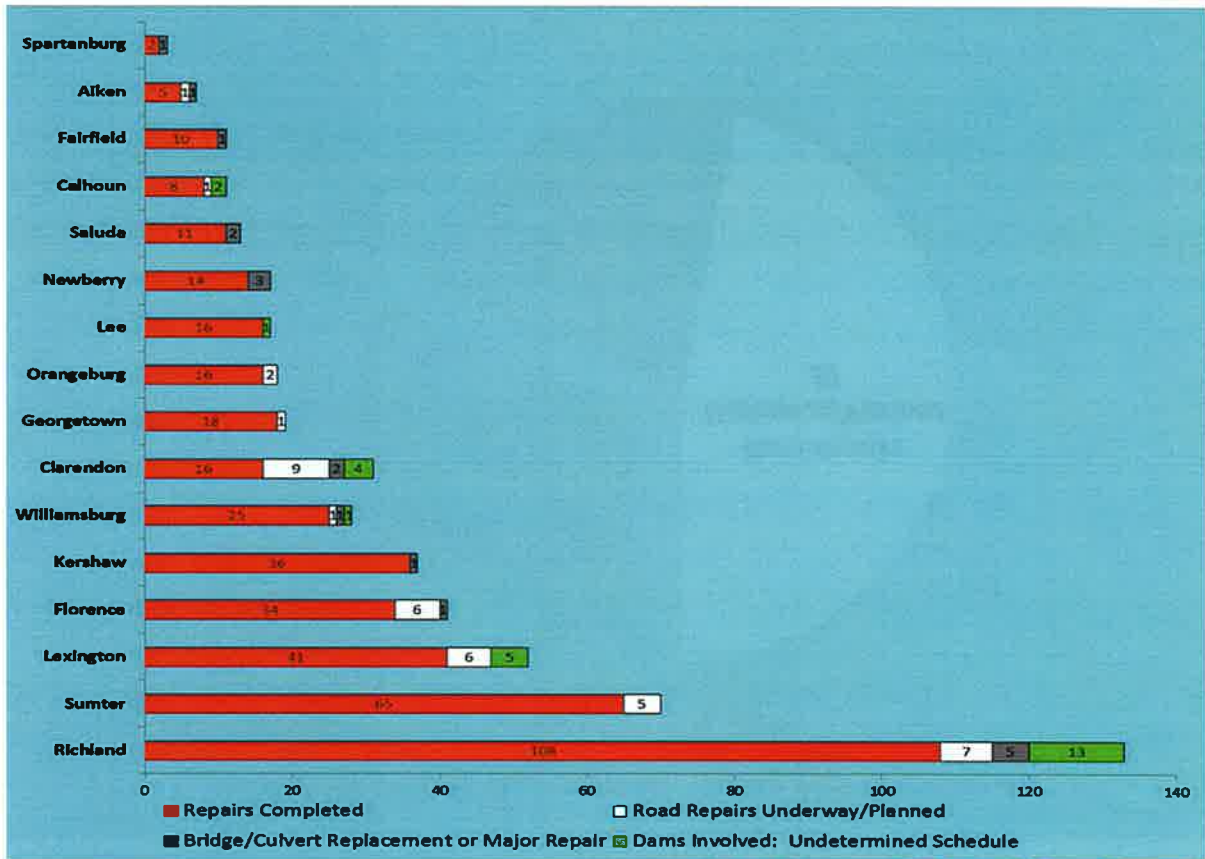
Florence: SC 51.

Sumter: US 76 Business (partial).

Williamsburg: SC 512.



Current Status as of Nov 4



All repairs to the state system have been completed in 14 Counties:

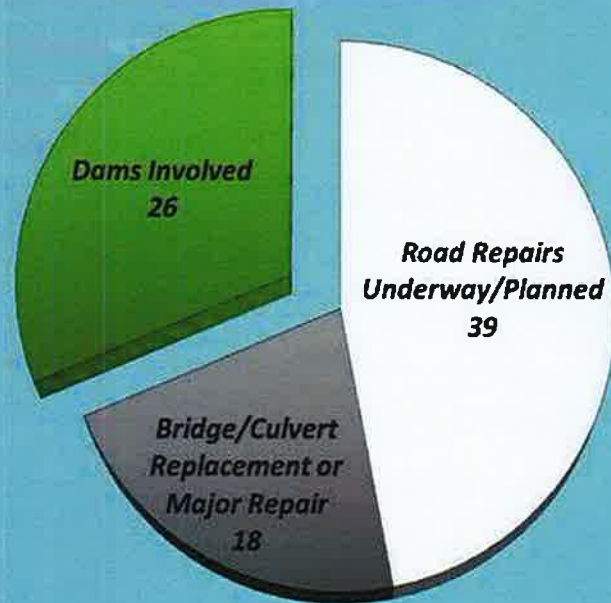
- Abbeville
- Allendale
- Anderson
- Bamberg
- Berkeley
- Charleston
- Colleton
- Darlington
- Dorchester
- Greenwood
- Horry
- Laurens
- Marion
- and McCormick



Current Status as of Nov 4

Work Plan for remaining 83 Closures

As of Nov. 4, 2015



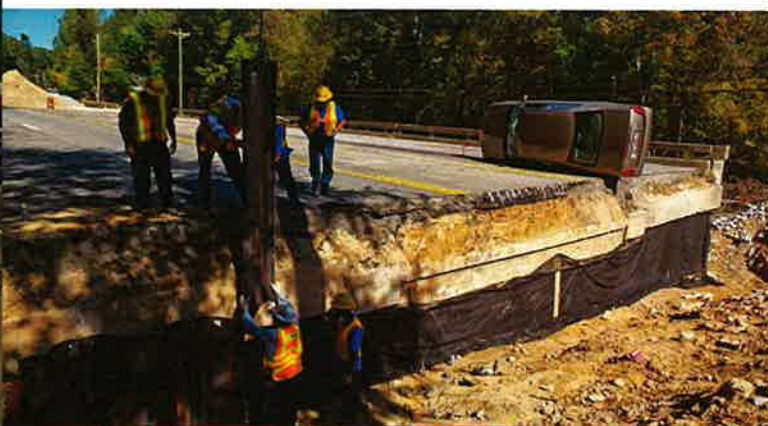
26 of the remaining 83 closures are expected to be reopened by Thanksgiving.

Recovery: What's Next?

- **Continue Assessments.**
- **Review all bridges in the impacted floodways.**
- **Continue repairs with in-house and contract forces.**
- **Fast-track FEMA & FHWA ER bridge replacement projects.**
- **Continue debris removal operations.**
- **Formulate estimated event financial impact, including latent damage.**
- **Aggressively manage all funds to ensure all financial obligations are met.**
- **Strive to continue normal program activities.**



Many Thanks to the Team!



SCDOT



In Memory of Timothy Wayne Gibson



SCDOT mourns the loss of Timothy Wayne Gibson, 45, who died in flood waters on Garners Ferry Road in Columbia on Sunday, October 4 while overseeing emergency work being done at that location.

Mr. Gibson represented hundreds of SCDOT workers who worked around the clock all around the state. He did not hesitate to put his life on the line to protect the public during the flood event and he is a true HERO.

SCDOT

